

## Our Mission

The **Enterprise Europe Network** supports European SMEs to innovate and grow internationally, while strengthening their resilience and accelerating their transition to more sustainable and digital business models.



The **Enterprise Europe Network** is funded through the Single Market Programme and is implemented by the European Innovation Council and SMEs Executive Agency (EISMEA) of the European Commission.



## How can we help you?

- [een.ec.europa.eu](http://een.ec.europa.eu)
- [een.gr](http://een.gr)



NATIONAL DOCUMENTATION CENTRE



Associate partner: **ENTERPRISE GREECE**  
INVEST & TRADE



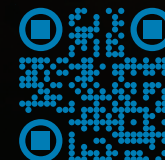
Hellas

Supporting SMEs to innovate and grow **internationally**



#EENCanHelp

Visit [een.gr](http://een.gr) and contact us



## The Network



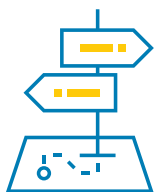
The **Enterprise Europe Network**, the world's largest support network for small and medium-sized enterprises, is active in 56 countries, including Greece. It consists of 569 partner organisations, more than 3,000 advisors and 25 sector groups.

Since 2008, it has helped 2.9 million businesses to innovate and grow internationally. Annually, more than 260,000 enterprises worldwide receive tailored free advisory services and support from its advisors.

**Enterprise Europe Network Hellas** is the Greek consortium serving as the national hub and a member of the international Network.

It was established in 2008, coordinated by the PRAXI Network and the National Documentation Centre (EKT), which continue to serve this role to this day.

For the **2025-2028 period**, the consortium consists of 15 organisations across the country, including industry associations, research institutes, chambers of commerce & industry and agencies supporting Greek entrepreneurship.



## Our Services

**Enterprise Europe Network Hellas** supports enterprises with tailored services in the following areas:

### **Business, Technology & Research Networking:**

Connecting enterprises with suitable business, technology, and research partners abroad.

### **Access to Finance and EU funding:**

Identification of funding sources and support for participation in research projects.

### **Innovation:**

Supporting the development of innovative products and services.

### **Digital Transition:**

Assisting the adoption of digital solutions.

### **Sustainability:**

Providing guidance for the transition to more sustainable and resilient business models.

### **Resilience:**

Strengthening local and regional enterprises to address global challenges.

### **Business Growth:**

Enhancing competitiveness and supporting SMEs in the next stages of development (scale-up).

### **Women Entrepreneurship:**

Empowering and mentoring women entrepreneurs.

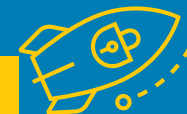
### **Intellectual Property (IP) Protection:**

Providing advisory support on Intellectual Property issues.

### **EU Single Market:**

Support to navigate EU legislation and policies and to benefit from the opportunities offered by the Single Market.

## Our Achievements



During the 2022-2025 period, **Enterprise Europe Network Hellas** focused on strengthening the competitiveness and internationalisation of Greek enterprises, achieving outstanding results:

- **6,800 Greek enterprises** received personalised advisory services and guidance.
- **165 partnership agreements** were signed between Greek and foreign companies.
- **16 success stories** were submitted to the European Commission and featured in the international media.

## Our Distinctions

- **1<sup>st</sup>** among all Network countries in the knowledge transfer indicator.
- **2<sup>nd</sup>** in proposal submissions for the EENergy energy efficiency project.
- **5 Greek advisors have been elected as Chair** of Thematic Working Groups and advisory bodies of the Network.
- **60 advisors** involved in Sector & Thematic Groups.

## Our Clients

- **51% successfully** entered new international markets – 88% of them within the European Union.
- **32% average increase** in turnover among the Network's enterprises.
- **9 out of 10 enterprises** stated that the Network met their needs exceptionally or very well.